



Client - Private  
 Architects - Lawrence and Long Architects  
 Joe Lawrence, Amelie Conway, Thomas Comerford  
 Structural Engineers - OBA Consulting Engineers  
 Services Engineers - Callaghan Engineering  
 Quantity Surveyors - Kenneth Quinn & Associates  
 Main Contractor - M.J. Clarke & Sons Ltd.

Project size - 43 m<sup>2</sup>  
 Duration - 5 months  
 Location - Dublin 6

Photography - Marie Louise Halpenny

## ADDITION TO A PROTECTED STRUCTURE

52 | 53 >

### Report by Lawrence and Long Architects

This project sets out to make a clearer connection of a late 19th century house to its rear garden. A kitchen extension built some 30 years previously was removed, as well as an internal partition wall forming two rear rooms. A glass pavilion was added to the rear of the house accommodating a dining area. This also provides daylight and an immediate contact with a new stone terrace and the garden beyond. The pavilion is made up of two interconnecting circles providing a continuous fluid edge of glass panels. The intention is that this pavilion appears weightless. It is detailed

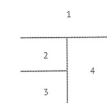
so that the placement of the slender structural circular columns recede visually.

A brick reading room is added to the rear of the entrance annex, aligning with the rear wall of the main house. This reading room contains a built-in oak bench with corresponding rooflight over and two openings to the new enlarged reception room at the rear.

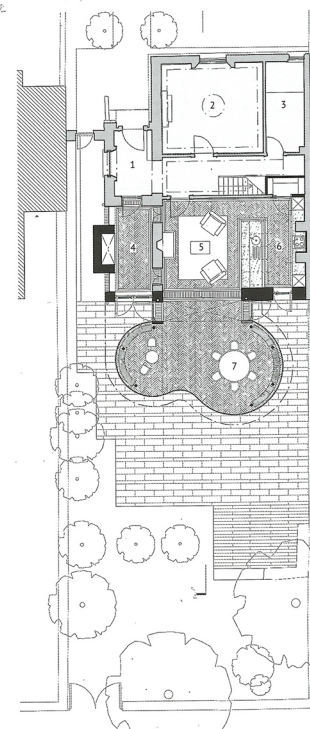
A covered verandah space between the reading room and the glass pavilion assists in an attempt to blur the lines between the interior and exterior.



REAR ELEVATION



1. View of rear elevation and terrace, at dusk
2. Internal view of living/ dining room with terrace and garden seen beyond
3. Detail of double curvature of glazed extension
4. View through reading gallery to garden beyond



GROUND FLOOR PLAN

1. Entrance hall
2. Front reception room
3. Bathroom
4. Reading gallery
5. Den
6. Kitchen
7. Dining room

